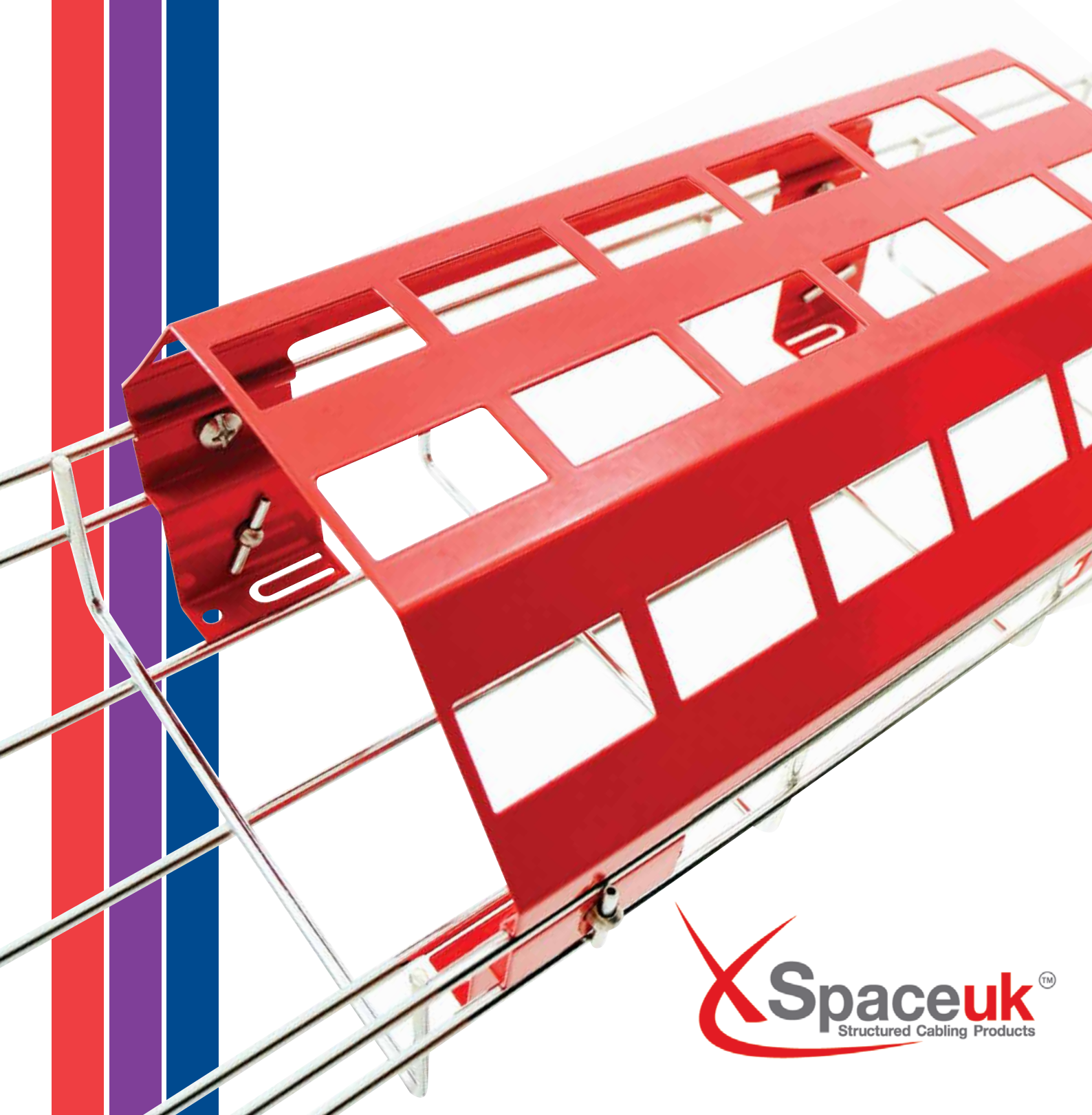


www.marco.cm.com/xspace

marco
cablemanagement

MARCO XSPACE FLEXIBLE PATCHING SYSTEM



SpaceukTM
Structured Cabling Products



MARCO XSPACE FLEXIBLE PATCHING SYSTEM

introduction



CABLE CRISIS?

Data Centres and office environments are constantly growing and evolving. We know the importance of optimising data centre space, and therefore the successful management of a large number of cables is crucial when addressing this issue.

To address this demand for efficiency we have designed a range of flexible patching systems called Marco Xspace. The systems allow you to manage a large number of cables in an ever changing environment, enabling flexible cable routing throughout a facility.

EASY TO INSTALL, SIMPLE TO SERVICE, COST EFFECTIVE

The Marco Xspace range was not only designed to optimise space but also for ease of installation. Designed and manufactured in the United Kingdom, they require no power tools so there is no exposure to noise and dust, minimising environmental and operational impact - ideal for data centres.

Marco Xspace will not only provide maximum flexibility and cost savings but also applies to necessary cabling standards.

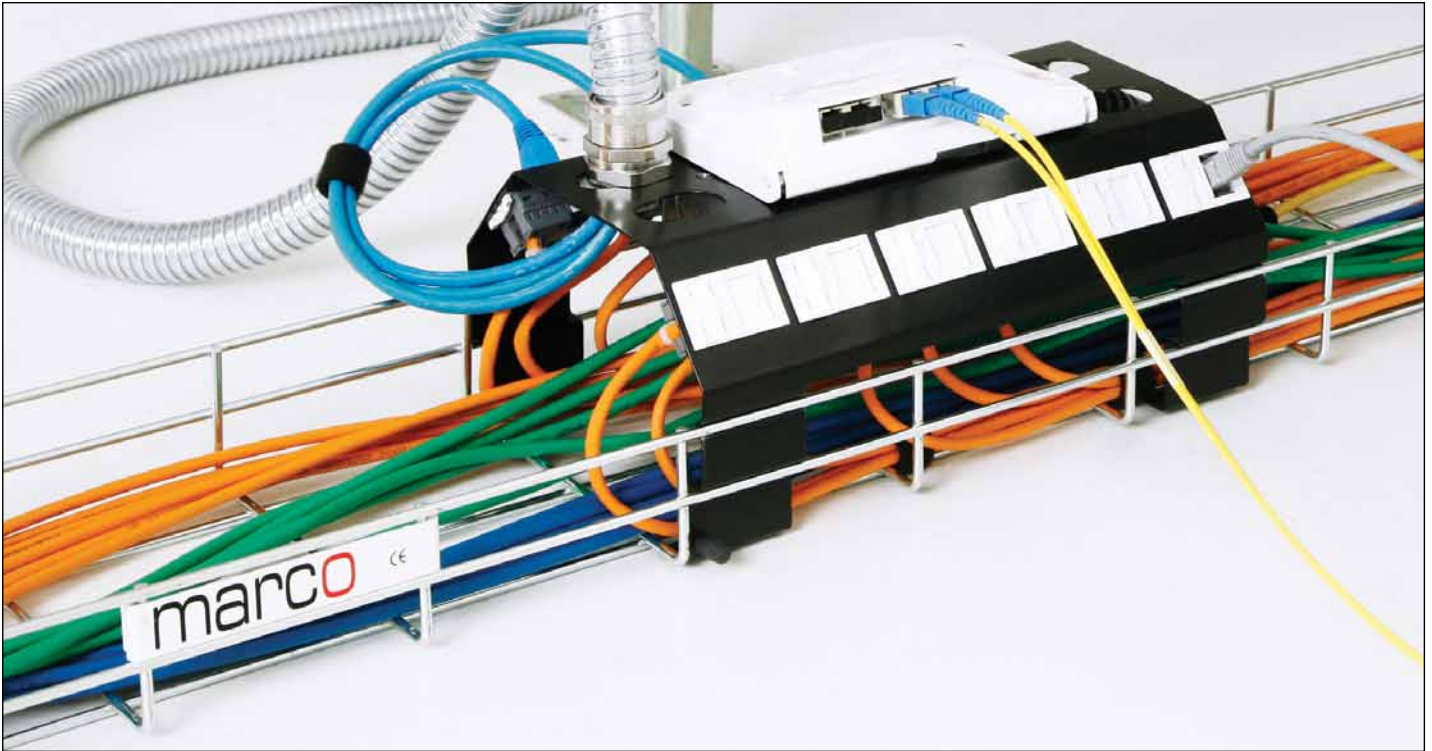
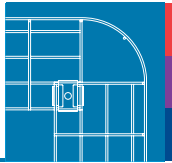


BESPOKE DESIGN SOLUTIONS

We have a range of products that can be customised to meet your requirements; Smoke detectors, command sockets, Wifi base units, copper and fibre cassettes.

Marco has worked closely with Hellermann Tyton and Tyco to offer a bespoke range to accept a full array of RapidNet cassettes and Tyco copper and fibre solutions.

Call one of our experts today and find a solution that works for you.



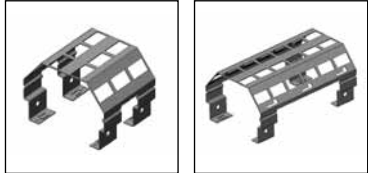
KEY DESIGN FEATURES

- Utilising and enhancing the free space on Steel Wire Cable Tray, Galvanised Cable Tray and Cable Matting
- Plug and play solution
- Numerous outlet types in one unit (Fibre, Copper)
- Caters for all structured cabling solutions, i.e. CAT5E, 6, 6A, 7 and MPO/MTP Fibre Cassettes
- Cable bend radius uncompromised during installation
- Maximum air flow ventilation
- Speed of installation
- Compatible with Pod Box applications
- Additional security can be provided by a lockable quick release cover
- Cabling and terminations protected
- Allows contingency for moves, adds and changes
- Suitable for mounting upside down - Ideal for Data centres and co-location environments



Flexible Patch Panel LJ6C - Cut outs - Compatible with Marco SWCT and Galvanized tray (150mm and above)

Item No.	Description	Module Type	Dimensions	SWCT/GT	Ports	Pack Size
MXH12	12 x LJ6C, Universal Panel	LJ6C	114 x 165 x 129 mm	SWCT & GT	12	20
MXH24	24 x LJ6C, Universal Panel	LJ6C	114 x 165 x 258 mm	SWCT & GT	24	20



MXH12

MXH24

Flexible Patch Panel LJ6C - With Single/Double gang and conduit entries

Item No.	Description	Module Type	Dimensions	SWCT/GT	Gang	Ports	Conduit Entry	Pack Size
MXH6-1	6 x LJ6C, Single Gang	LJ6C	114 x 165 x 129 mm	SWCT & GT	Single	6	N/A	20
MXH12-2	12 x LJ6C, 2 Gang Conduit Entry	LJ6C	114 x 165 x 258 mm	SWCT & GT	Double	12	20/25 mm	20



MXH6-1

MXH12-2

Top Mounting Flexible Patch Panel LJ6C – With Single/Double gang and conduit entries

Item No.	Description	Module Type	Dimensions	SWCT/GT	Gang	Ports	Conduit Entry	Pack Size
MXL24	24 x LJ6C, Top Mounting	LJ6C	38 x 165 x 258 mm	SWCT	-	24	-	20
MXL6-1	6X LJ6C single gang	LJ6C	55 x 165 x 129 mm	SWCT	Single	6	-	20
MXL12-2	12 x LJ6C, 2 Gang Conduit Entry Top Mounting	LJ6C	55 x 165 x 258 mm	SWCT	Double	12	20/25 mm	20



MXL24

MXL6-1/12-2

Flexible Patch Panel MPO/MTP - Cassette Frame

Item No.	Description	Module Type	Dimensions	SWCT/GT	Cassette Slots	Pack Size
MXC2	Universal Panel	Cassette	141 x 165 x 258 mm	SWCT & GT	2	20
MXC3	Universal Panel	Cassette	141 x 165 x 258 mm	SWCT & GT	3	20
MXC2-HT	RapidNet, Universal Panel	Cassette	145 x 165 x 258 mm	SWCT & GT	2	20
MXC2-TYCO	Tyco Solution	Cassette	145 x 165 x 258 mm	SWCT & GT	2	20

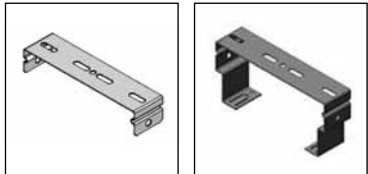


MXC2-HT

MXC3

Accessories Mounting Bracket

Item No.	Description	Dimensions	SWCT/GT	Pack Size
MXMB-1	Mounting Bracket Universal	72 x 165 x 43 mm	SWCT & GT	20
MXMB-2	Mounting Bracket Top Mounting	33 x 165 x 43 mm	SWCT	20



MXMB-1

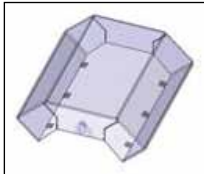
Suitable for 150mm SWCT only

MXMB-2

Designed to fit 150mm SWCT-GT and above

Accessories

Item No.	Description	Dimensions	Pack Size
MXSC	Security Cover	70 x 260 x 260 mm	1
MXTB	Turn Buckle	-	POA



MXSC



MXTB

Turnbuckle only required for 150mm galvanised tray

SWCT - Steel Wire Cable Tray GT - Galvanised Tray

Unit 8, Bryn Cefni Industrial Park,
Llangefni, Anglesey. LL77 7XA

Sales Hotline: 01248 72 57 72
Fax: 01248 72 57 88
Sales e-mail: sales@marcocm.com

www.marcocm.com/xspace

